



Respectful Relationships and Anti-Bullying: statement for Children / Young People in

West Linton Primary School & ELC

Scottish Borders Council Vision

It is our vision that all learning establishments are safe, respectful and nurturing environments where bullying behaviour is never acceptable. It is therefore critical that those who play a role in the lives of children and young people in the Scottish Borders are equipped to prevent and respond effectively to incidents of bullying behaviour. Getting it right for every child (GIRFEC) in the Scottish Borders ensures that the child and their family are at the centre of policy and practice and that the views of the child, young person and their parents/carers are sought, listened to and taken into account when decisions are being made.

Policy statement purpose

In the Scottish Borders, learning establishments promote respectful relationships approaches.

This document builds on SBC:INCLUDES Respectful Relationships and Anti-bullying Policy and outlines the steps that will be undertaken in West Linton Primary School & ELC to provide guidance to staff, parents/carers and children/young people on the prevention and management of bullying behaviour. Our aim is to make West Linton Primary School & ELC a safe, respectful and nurturing environment where bullying behaviour is never acceptable.



Raising awareness and prevention

Staff and Volunteers

In addition to promoting and role modelling respectful relationships and positive behaviour, all staff and volunteers in West Linton Primary School & ELC with a responsibility for children/young people will participate in the training and development listed below:

Please list the training that staff in the learning establishment will undertake in this box.

- Whole School Approaches to Nurture. Nurturing approaches are very important to us here and we have all explored and implemented nurturing environments. This ensures that young people feel safe, valued and secure in school and that their behaviour is understood developmentally and as a form of communication.
- Zones of Regulation. This approach supports young people to regulate their emotions and to have a language to support discussion which is shared.
- Restorative Approaches – Where there is a requirement for young people to take part in discussion about their behaviour, restorative conversations and scripting is used. All staff are trained in Restorative Approaches and use these with young people.
- Vision and Values. Each year we evaluate our School Vision and Values to ensure that they are fit for purpose and that our school community
- Respect Me – All staff have access to and have engaged with the National online guidance

Pupils

At West Linton Primary & ELC we actively and openly talk about and discuss bullying behaviour.

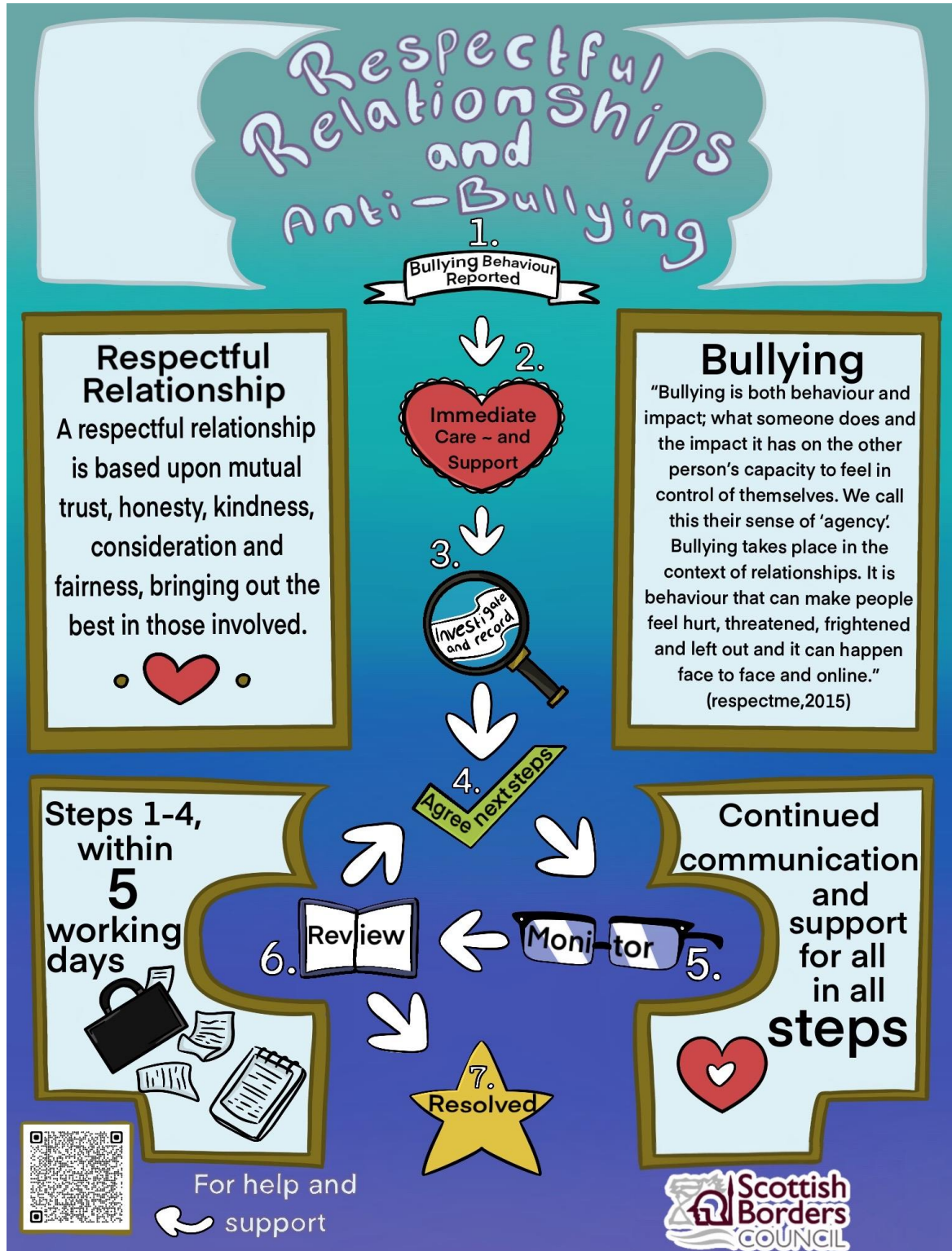
Listed below are the strategies / resources, which will be used to raise the children/young people's awareness and prevent bullying:

Please list the resources/strategies that staff in the learning establishment will use to raise awareness and prevent bullying with children and young people.

- Building Resilience – Pupils have a list of ten tools to support them on the river of life
- Relationships, Sexual Health and Parenthood Education – Pupils can talk freely and with confidence about respectful relationships.
- Engagement with Vision and Values – Pupils are aware of and discuss school vision and values and can relate it to their learning. All classes have a class charter to support their understanding of the school values, which they co-create with classmates at the beginning of each school year.
- Recognition Wall – Pupils are recognised for respectful and kind relationships in class.
- Restorative Conversations & Scripting – When there is a need to, pupils engage with conversations to restore and repair relationships, rather than having punitive consequences.
- Zones of Regulation – Pupils have a common language to discuss their emotions. This is used across classes and in common areas throughout the school, including the playground.



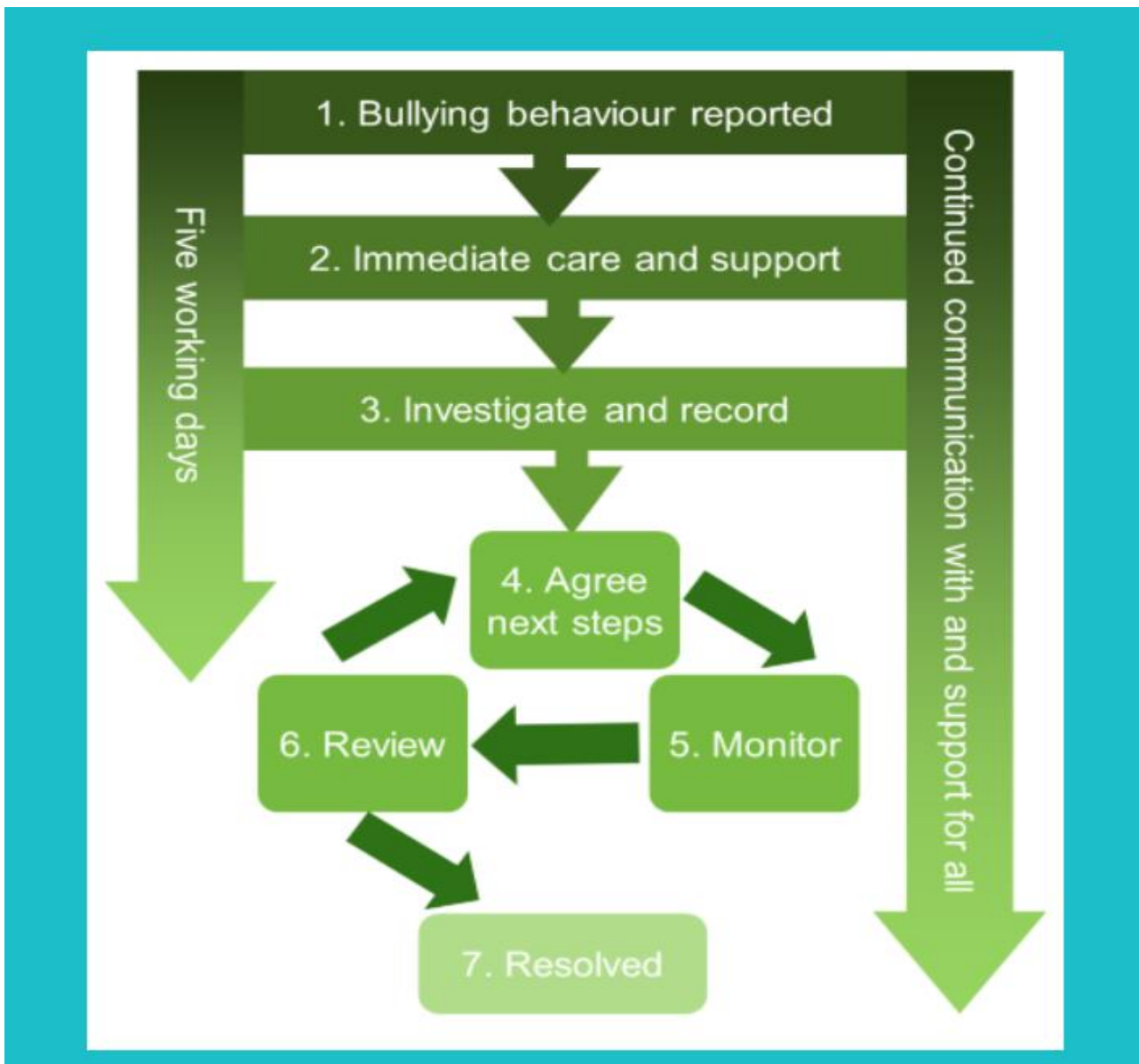
Pupils were keen to have the Respectful Relationships & Anti-Bullying poster in our statement.





Recording and monitoring strategies

In West Linton Primary School & ELC incidents of bullying are recorded and monitored, in accordance with the guidance in SBC:INCLUDES Respectful Relationships and Anti-Bullying Policy. (Incidents will be recorded in the SEEMIS Bullying and Equality Module in schools or manually in learning establishments who do not have access to SEEMIS)





Reporting and feeding back about bullying incidents

In West Linton Primary School children/young people, staff and parents will be made aware of the confidential and safe ways to report bullying behaviour.

Ways for Pupils to report bullying behaviour:

Please list the methods of reporting which are available to the children and young people along with the people they can report to.

- Approach any member of staff to discuss
- Submit a worry to the class worry box
- Speak to parents or a friend (who can then pass onto a member of staff)
- Use the QR code emails to contact any member of staff anonymously.

Ways for parents to report bullying behaviour:

Please list the methods of reporting which are available to the parents/carers along with the people they can report to.

- Approach any member of staff to discuss.
- Email any staff member or alternatively email the school office.
- Phone the school office (WestLintonPS@scotborders.gov.uk) to organise a meeting/conversation with a member of staff.
- Contact staff member directly via Showbie

At West Linton Primary School, we pride ourselves on having respectful and open relationships with our parent body. As a result, we hope that parents would feel comfortable to approach us direct. However, where this is not possible, there is a Parent Council email address: westlintonparents@gmail.com

Ways for Staff to report bullying behaviour:

Please list the methods of reporting which are available to staff along with the people they can report to.

- Discussion with Senior Leadership Team
- Discussion with another member of staff who will then report to Senior Leadership Team – For staff bullying allegations.
- Discussion with HR Case management – For staff bullying allegations
- Seemis Bullying & Equalities module – For all incidents of reported bullying
- Latest Significant Events - Chronologies – For purposes of identifying trends/ patterns
- Lexi - Incident Reports – Physical Behaviour
- Pastoral Notes – A record of discussions/ incidents

In West Linton Primary School & ELC, Jenni Curson (Headteacher) & Hazel Whitefield (Depute Headteacher) will be responsible for ensuring all parties are actively informed of progress made.



Children / young people's views on respectful relationships

We have shared the Respectful Relationships and Anti-Bullying poster with our children/young people and consulted with them in the creation of this statement. Some of their comments are shown below:

Add any comments made by children and young people about the poster. Where and how it should be displayed, how it should be communicated/promoted etc

- Across the majority of classes, young people commented on the welcoming ethos in our school. The children feel that they have adults that they can speak to and that they feel safe in school.
- Across all classes, pupils were pleased that the West Linton Primary School Values of kindness, respect and honesty were important within the Respectful Relationships Policy.
- The young people felt that the messages within the poster and the policy are discussed in class and during assemblies – That our values are part of who we are and that we don't need rules if we follow the values.
- The young people thought that the poster should be displayed beside the QR Code emails to remind people what these are for. They also thought it was a useful reminder for the poster to be in every classroom.

Parent's views on respectful relationships

We have shared the Respectful Relationships and Anti-Bullying parent/carer leaflet with our parents/carers and consulted with them in the creation of this statement. Some of their comments are shown below:

Add any comments made by presents/carers have made about how to distribute the leaflet, ways that they can get involved with anti-bullying work in school etc

- Parents were reassured that there is a process of investigation, next steps and feedback.
- Parents were understanding of the approach to sharing information pertinent to their child and not necessarily other involved young people.
- Parents knew the school values and agreed that young people also know these and try to live by them.
- Parents see the age appropriate discussion of respect as a positive; young people know that mistakes are proof that you are learning and older pupils are aware that there are factors in all people's lives that may effect their behaviour.
- Parents see the wider school team as pivotal in the ethos of the school; including the admin assistant and janitor who deliver pastoral support to pupils.
- Parent agreed with the ways to report to school and felt that there was a range of ways to contact and discuss.

Policy statement review date **December 2026** (Every three years)

Head of West Linton Primary School & ELC Signature: *Jenni Curson*

Date: 21st December 2023